

How to upgrade GL840 firmware

A. Notes

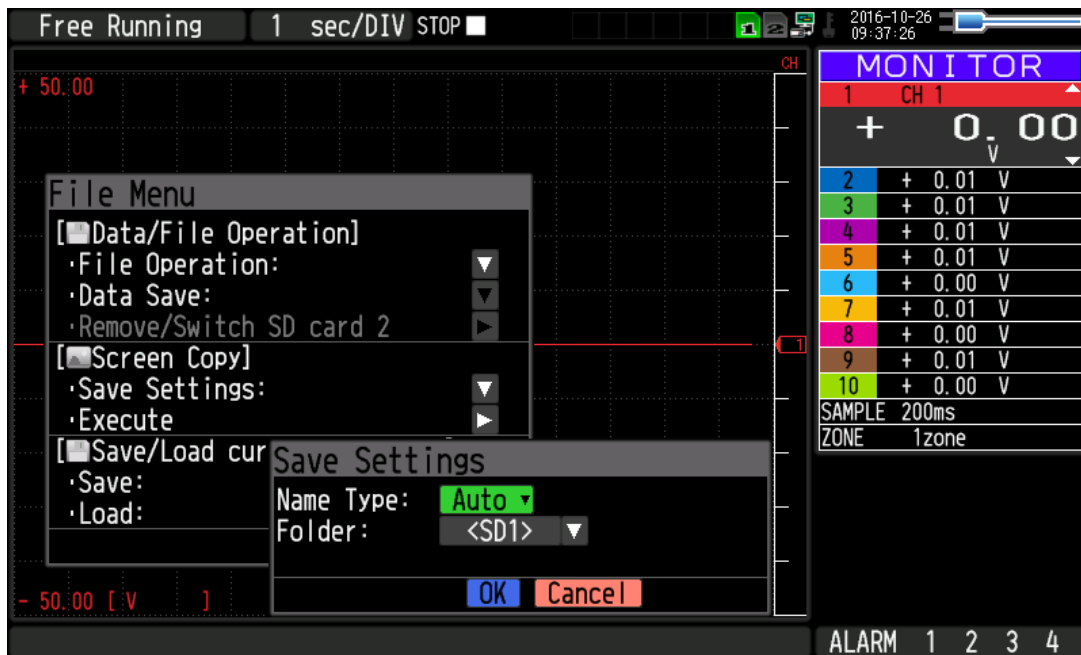
- This manual explains the upgrade method of GL840 Firmware.
- This firmware is only for GL840. Please note that it is not available in other models.
- During the upgrade, please do not turn off the power. The firmware can be damaged if the power is cut off along the way. In this case, it may become unrecoverable.
- To upgrade, the SD card is required.
The available type in the slot of the SD card for GL840 is SD/SDHC. (SDXC is not available.)
- Saving and loading settings when upgrading from firmware V1.54 or earlier
 - Setting conditions are initialized. Please save the setting conditions in advance.
 - The setting values in the I/F menu (IP address, etc.) may change.
 - I/F menu settings cannot be saved in a file. Please make a note of the settings in advance and set them again after upgrading.

Please refer to "B. Version Upgrade Procedure (V1.54 or earlier)" for the upgrade procedure.

- Saving and loading settings when upgrading from firmware V1.60 or later
 - The setting values in the I/F menu (IP address, etc.) may change.
 -
 - The setting values in the I/F menu (IP address, etc.) may change. Please make a note of the settings in advance and set them again after upgrading. Please refer to "C. Version Upgrade Procedure (V1.60 or later)" for the upgrade procedure.

B. Version upgrade procedure(V1.54 or earlier)

1. Open the “File Menu” by pressing the “FILE” key.
2. Select “Save Settings” of “Save/Load current settings” to display the following screen.



- * The set values in the I/F menu cannot be saved in a file.
Please make a note of the current settings.

3. Set “Name Type” and “Folder” and then select “OK” .
 - Name Type
 - : Auto → The file name will be the date and time.
 - : User → Saved in any file name
 - : SN → Saved in any file name with “SERxxx”. The xxx portion will contain a sequential number.
 - Folder
 - : < SD1 > SD CARD 1 → Save in the SD card Slot 1.
 - : < SD2 > SD CARD 2 → Save in the SD card Slot 2.

4. Prepare the upgrade file.

Download the upgrade file from our WEB site.

Right-click the downloaded ZIP file and select "Extract All".

MainVerxxxRevyyyyAzz.GL840

Version information is shown below.

- ~~xxx~~: Version information
(Ex.) "160" indicates "V1.60" .
 - ~~yyyy~~: Revision Information
(Ex.) "0001" indicates "Rev0001" .
 - ~~zz~~: Special item number
(Ex.) "00" indicates "standard product"
- * If you would like to update across the V 1.60, please also update the pattern file.
(e.g., Update V1.00 to V1.60 or V1.54 to V1.61)

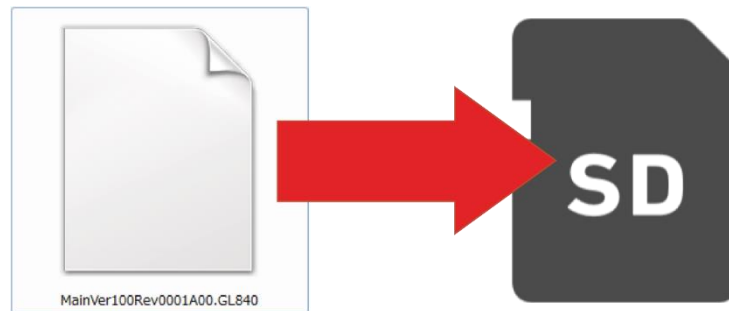
You can also download the Pattern file from our website.

(The following file will be created after double-clicking and unzipping.)

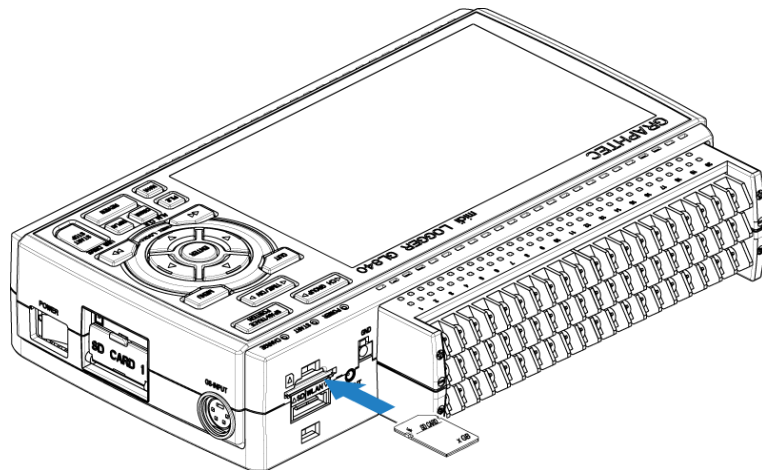
PatternVerxxxRevyyyyAzz.GL840

See Chapter 9, How to upgrade the Pattern file for reference.

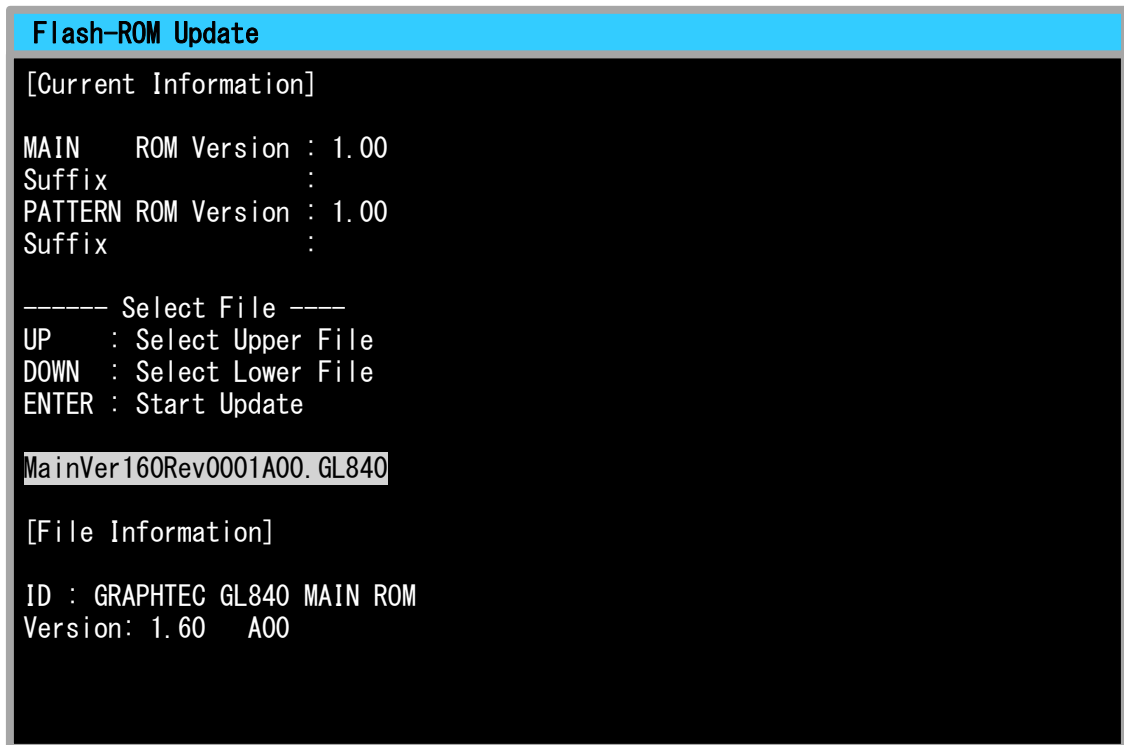
5. Insert the SD card for the version upgrade into the PC and copy the upgrade file to the root folder in the SD card.
(Root folder refers to the top folder of the directory.)



6. During GL840 power is off, insert the SD card including the upgrade file.



7. Turn on the power of GL840.



The screenshot shows a terminal window titled "Flash-ROM Update" with a blue header. The main content area is black with white text. It displays current information about the main and pattern ROMs, both at version 1.00. Below this, it shows a file selection menu with options for "UP", "DOWN", and "ENTER". The file "MainVer160Rev0001A00. GL840" is highlighted. At the bottom, it shows file information for "ID : GRAPHTEC GL840 MAIN ROM" and "Version: 1.60 A00".

```
Flash-ROM Update
[Current Information]
MAIN   ROM Version : 1.00
Suffix :
PATTERN ROM Version : 1.00
Suffix :

----- Select File -----
UP      : Select Upper File
DOWN    : Select Lower File
ENTER   : Start Update

MainVer160Rev0001A00. GL840

[File Information]
ID : GRAPHTEC GL840 MAIN ROM
Version: 1.60  A00
```

The screen above is displayed, then press the “ENTER” key.

Version upgrade is started up. Wait until it is finished.

8. “Please Turn Off Power . --- I have locked up.” message is displayed with yellow characters. You can hear a buzzer sound after the upgrade process, then turn off the power.

Do not turn off the power until the version upgrade process is completed.

```
Flash-ROM Update
DOWN  : Select Lower File
ENTER : Start Update

MainVer160Rev0001A00. GL840

[File Information]

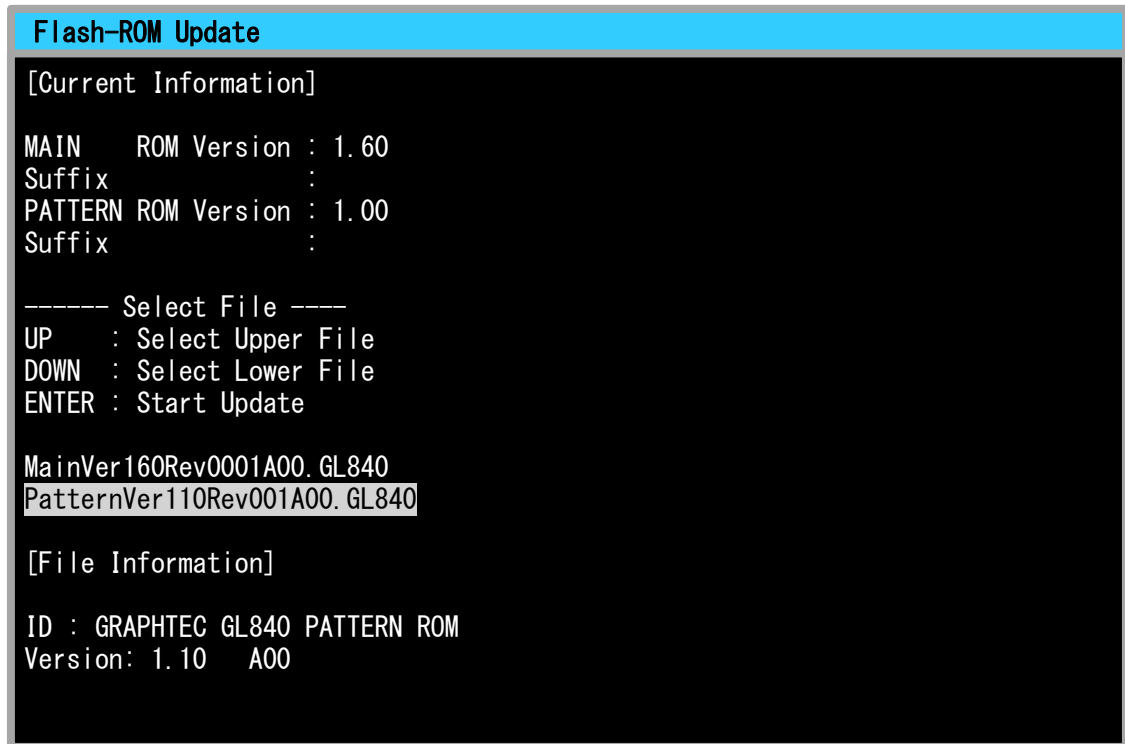
ID : GRAPHTEC GL840 MAIN ROM
Version: 1.60  A00

Reading ROM Data ....
-+-----42493c
Start PATTERN ROM Update Sequence.
Checking Rom Signature ....
---Erase---
*****
****Complete.
---Write---
*****Complete.
ROM Update Complete!!

Please Turn Off Power. --- I have locked up.
```

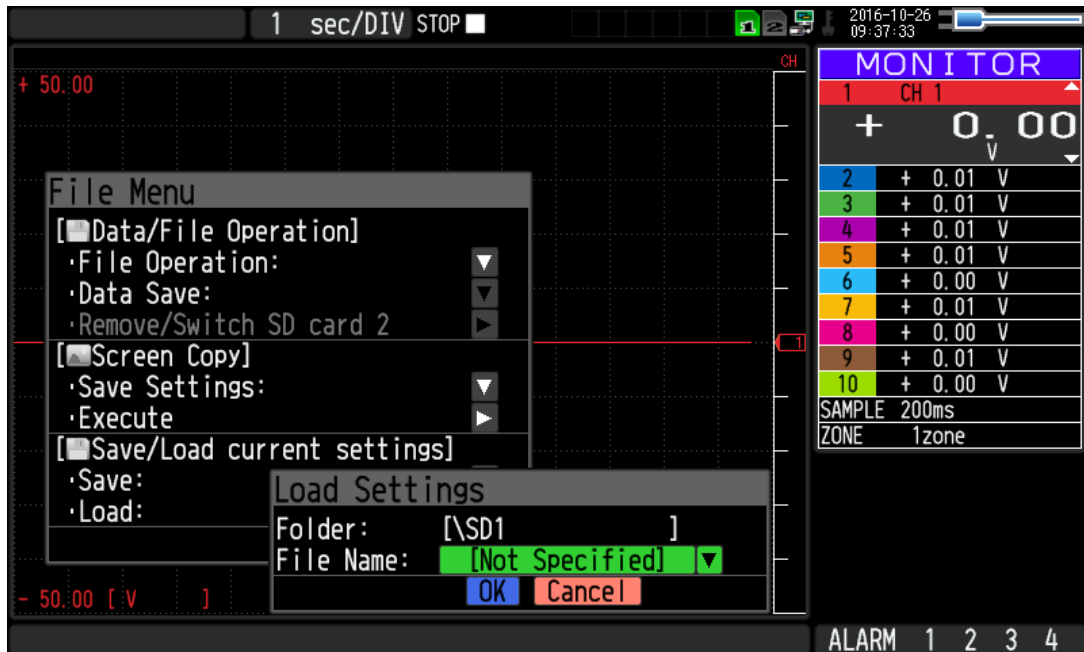
9. Update the Pattern file

If you would like to update across the V 1.60, please also update the pattern file. You only need to update the Pattern file once.



Select PatternVer110Rev0001A00.GL840, and press the “ENTER” key.
Do not turn off the power until the version upgrade process is completed.
(You can hear a buzzer sound after the upgrade process.)

10. Remove the SD card and turn on the power.
11. Open the “File Menu” by pressing the “FILE” key.
12. Select “Load ” of “Save/Load current settings” to display the following screen.
Then, open the setup file saved in Step 3 and select “OK” to apply the settings.



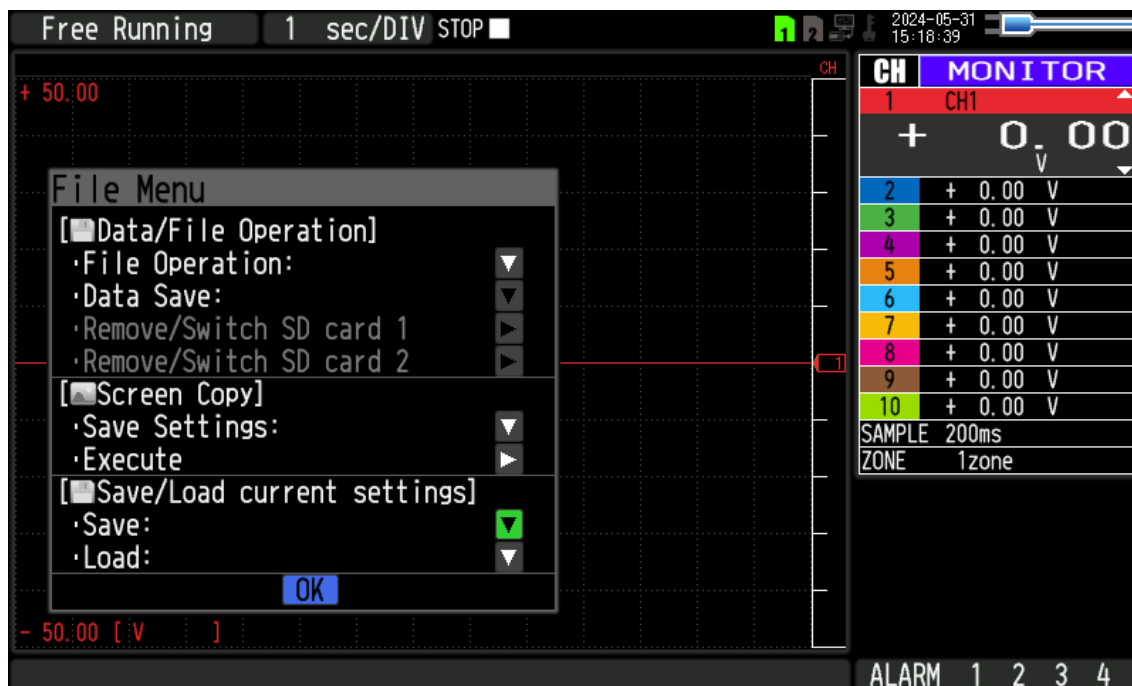
* Confirm the I/F settings. Set it again if the settings have been changed.

13. Delete the firmware saved in the SD card.

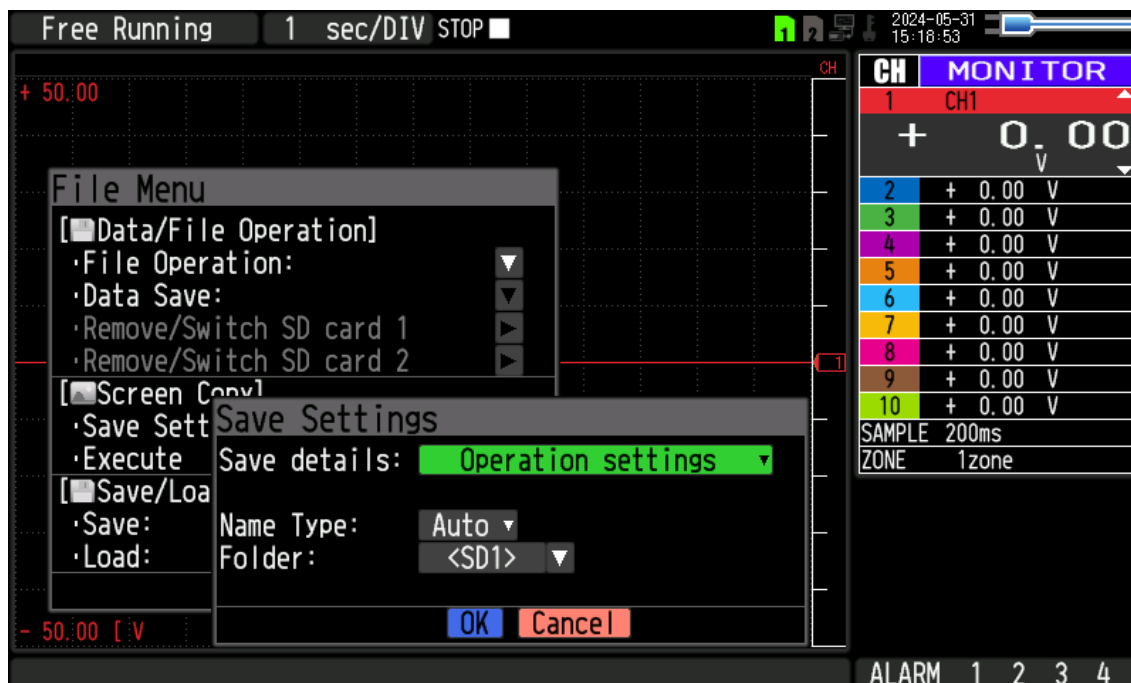
GL840 version upgrade is completed.

C. Version upgrade procedure(V1.60 or later)

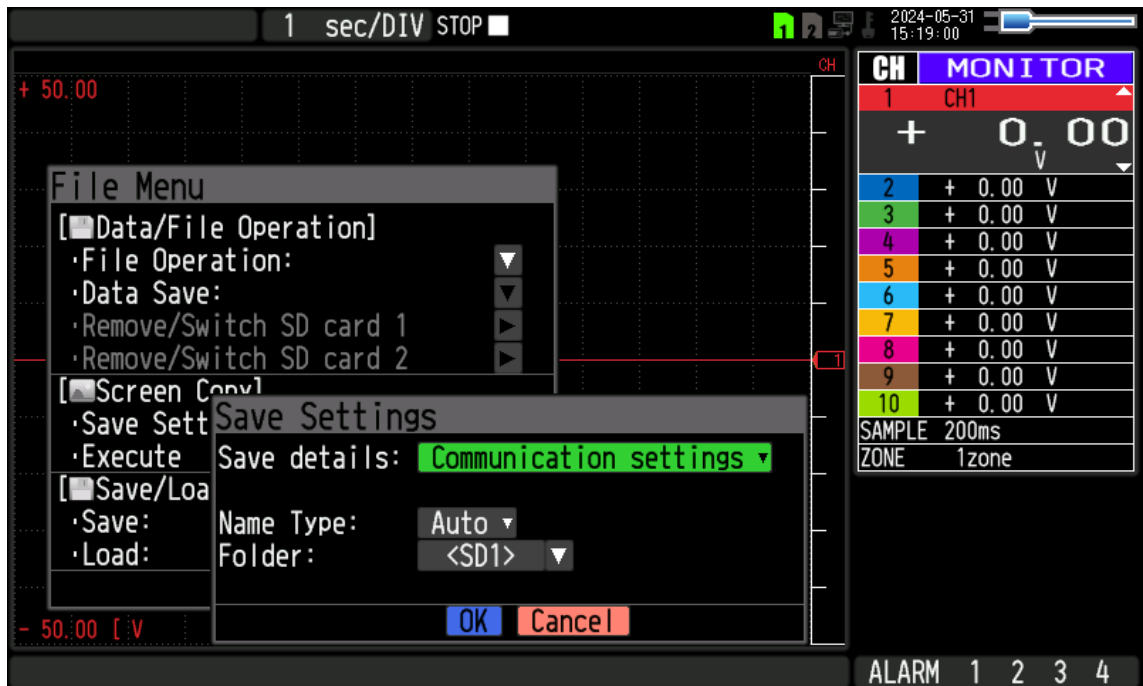
1. Open the “File Menu” by pressing the “FILE” key.



2. Select “Save” of “Save/Load current settings” to display the following screen.



3. Select “Operation settings” of “Save details”.
4. Set “Name Type” and “Folder” and then select “OK” .
 - Name Type
 - : Auto → The file name will be the date and time.
 - : User → Saved in any file name
 - : SN → Saved in any file name with “SERxxx”. The xxx portion will contain a sequential number.
 - Folder
 - : < SD1 > SD CARD 1 → Save in the SD card Slot 1.
 - : < SD2 > SD CARD 2 → Save in the SD card Slot 2.
5. Then select “Communication settings” of “Save details”.



6. Set “Name Type” and “Folder” and then select “OK” .

7. Prepare upgrade file.

Download the upgrade file from our WEB site.

Right-click the downloaded ZIP file and select "Extract All".

MainVer~~xxx~~Rev~~yyyy~~Azz.GL840

Version information is shown below.

- ~~xxx~~: Version information
(Ex.) "160" indicates "V1.60" .
- ~~yyyy~~: Revision Information
(Ex.) "0001" indicates "Rev0001" .
- ~~zz~~: Special item number
(Ex.) "00" indicates "standard product"

* If the website annotation specifies that the Pattern file should be updated,
please update the Pattern file.。

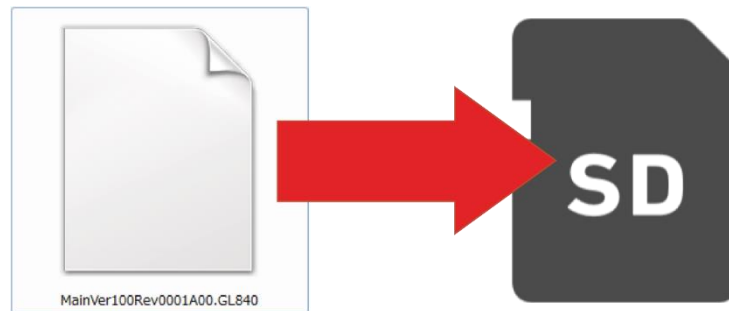
You can also download the Pattern file from our website.

(The following file will be created after double-clicking and unzipping.)

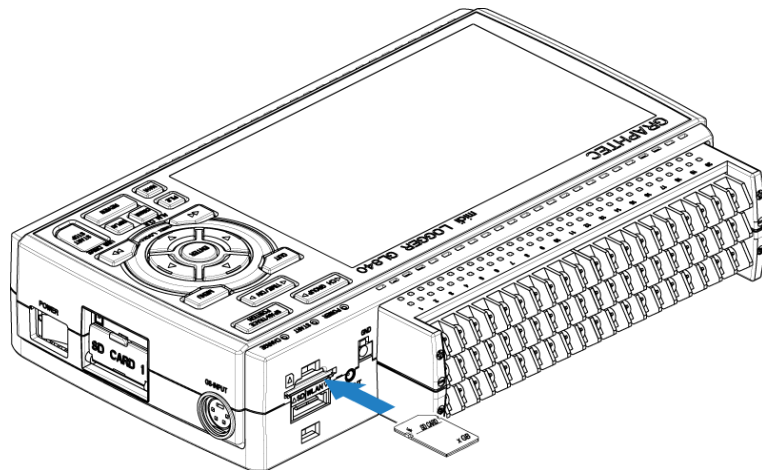
PatternVer~~xxx~~Rev~~yyyy~~Azz.GL840

See Chapter 9, How to upgrade the Pattern file for reference.

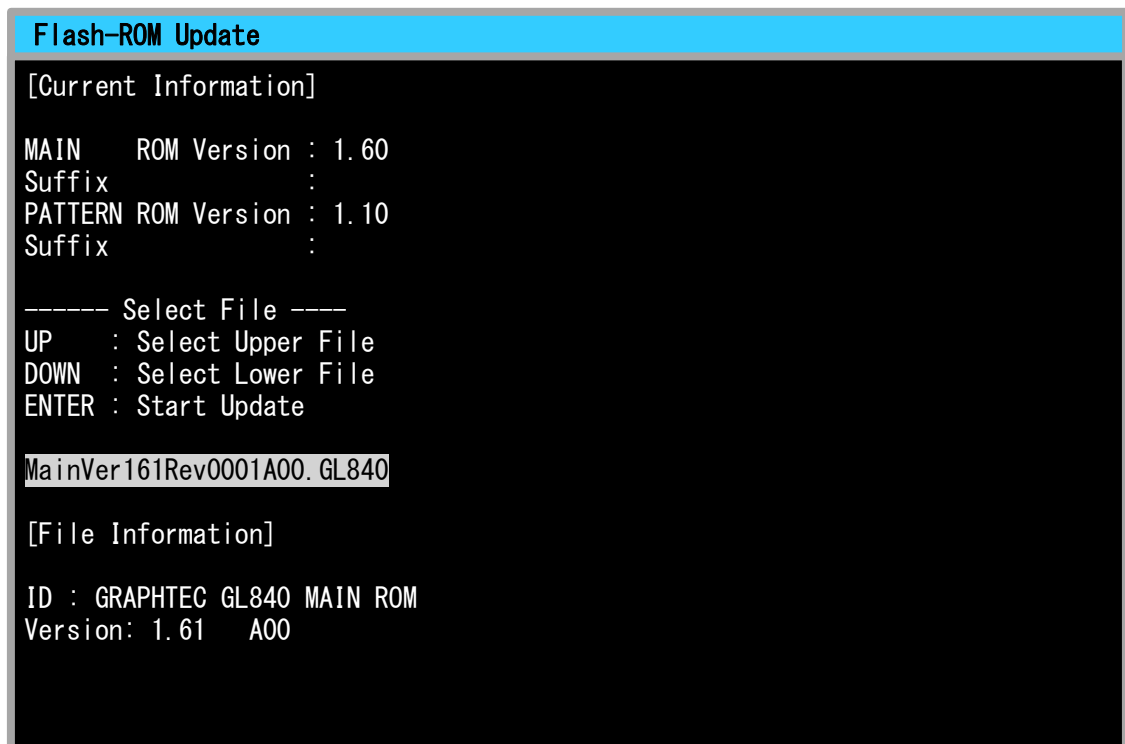
8. Insert the SD card for the version upgrade into the PC and copy the upgrade file to the root folder in the SD card.
(Root folder refers to the top folder of the directory.)



9. During GL840 power is off, insert the SD card including the upgrade file.



10. Turn on the power of GL840.

A screenshot of a terminal window titled "Flash-ROM Update". The window has a blue header bar with the title. The background is black with white text. The text is organized into sections: "[Current Information]" showing "MAIN ROM Version : 1.60" and "Suffix :", and "PATTERN ROM Version : 1.10" and "Suffix :". Below this is a "----- Select File ----" section with instructions: "UP : Select Upper File", "DOWN : Select Lower File", and "ENTER : Start Update". A file name "MainVer161Rev0001A00. GL840" is highlighted with a grey background. The next section is "[File Information]" showing "ID : GRAPHTEC GL840 MAIN ROM" and "Version: 1.61 A00".

```
Flash-ROM Update

[Current Information]

MAIN   ROM Version : 1.60
Suffix :
PATTERN ROM Version : 1.10
Suffix :

----- Select File ----
UP     : Select Upper File
DOWN   : Select Lower File
ENTER  : Start Update

MainVer161Rev0001A00. GL840

[File Information]

ID : GRAPHTEC GL840 MAIN ROM
Version: 1.61  A00
```

The screen above is displayed, then press the “ENTER” key.
Version upgrade is started up. Wait until it is finished.

11. “Please Turn Off Power. --- I have locked up.” message is displayed with yellow characters. You can hear a buzzer sound after the upgrade process, then turn off the power.

Do not turn off the power until the version upgrade process is completed.

```
Flash-ROM Update
DOWN : Select Lower File
ENTER : Start Update

MainVer161Rev0001A00. GL840

[File Information]

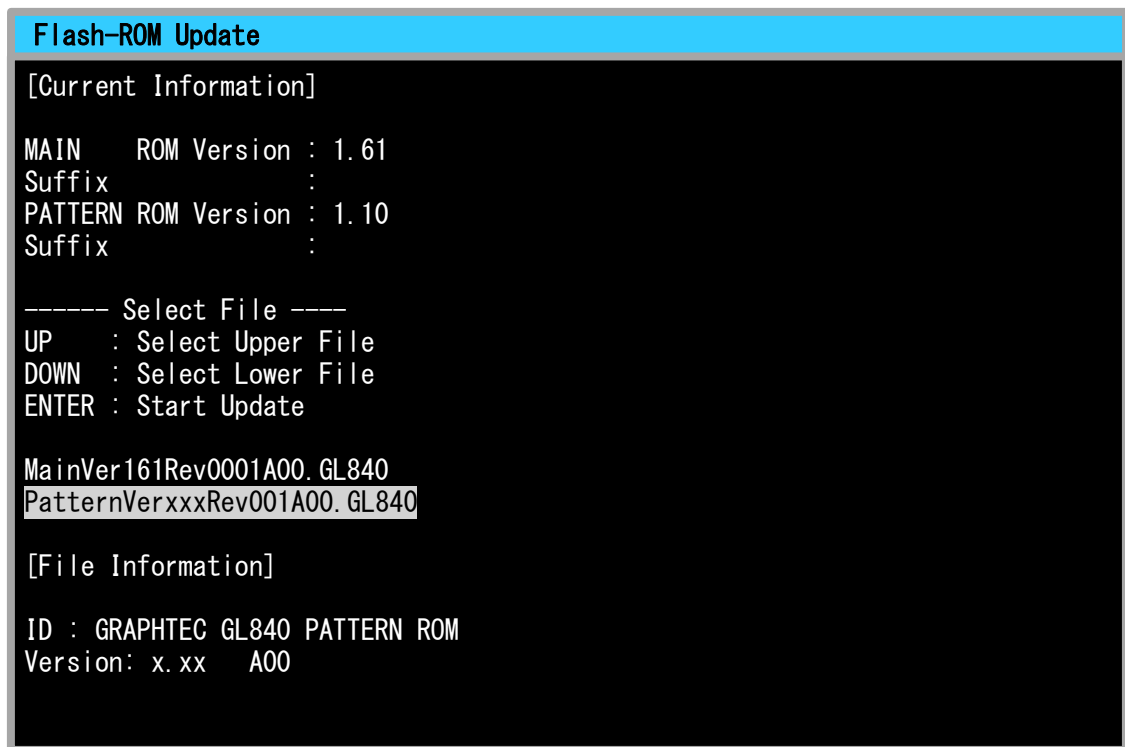
ID : GRAPHTEC GL840 MAIN ROM
Version: 1.61 A00

Reading ROM Data ....
-+-----42493c
Start PATTERN ROM Update Sequence.
Checking Rom Signature ....
---Erase---
*****
*****Complete.
---Write---
*****Complete.
ROM Update Complete!!

Please Turn Off Power. --- I have locked up.
```

12. Update Pattern file

If the pattern file is specified to be updated along with the firmware update, the pattern file should be updated together.



```
Flash-ROM Update

[Current Information]

MAIN    ROM Version : 1.61
Suffix  :
PATTERN ROM Version : 1.10
Suffix  :

----- Select File -----
UP      : Select Upper File
DOWN    : Select Lower File
ENTER   : Start Update

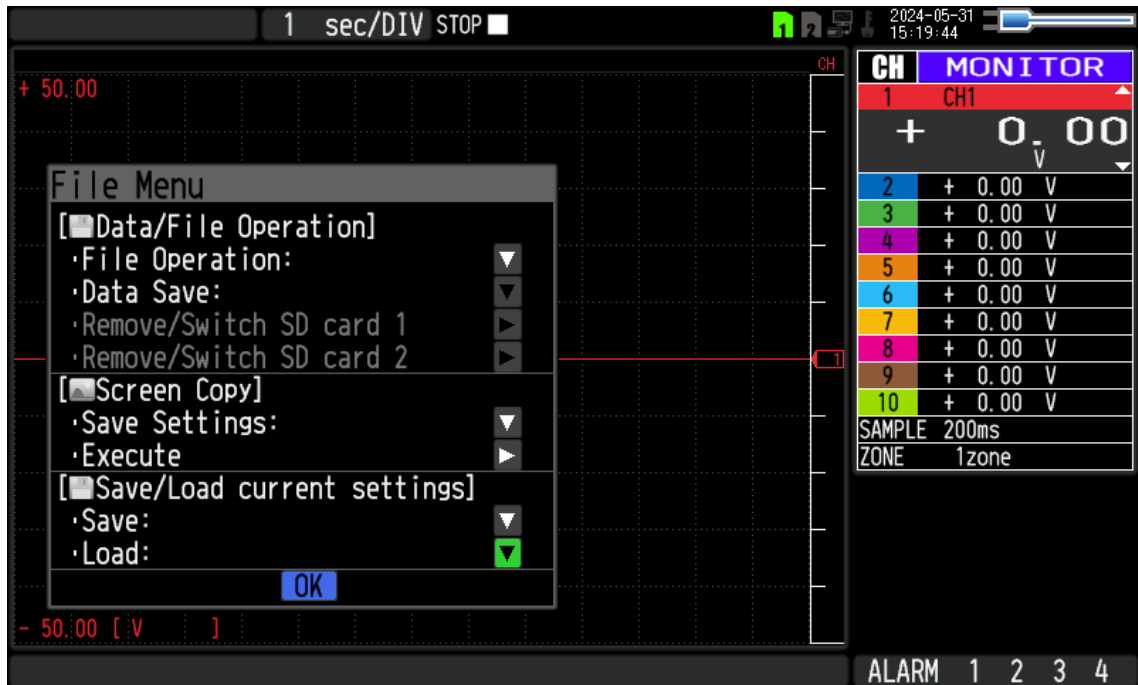
MainVer161Rev0001A00. GL840
PatternVerxxxRev001A00. GL840

[File Information]

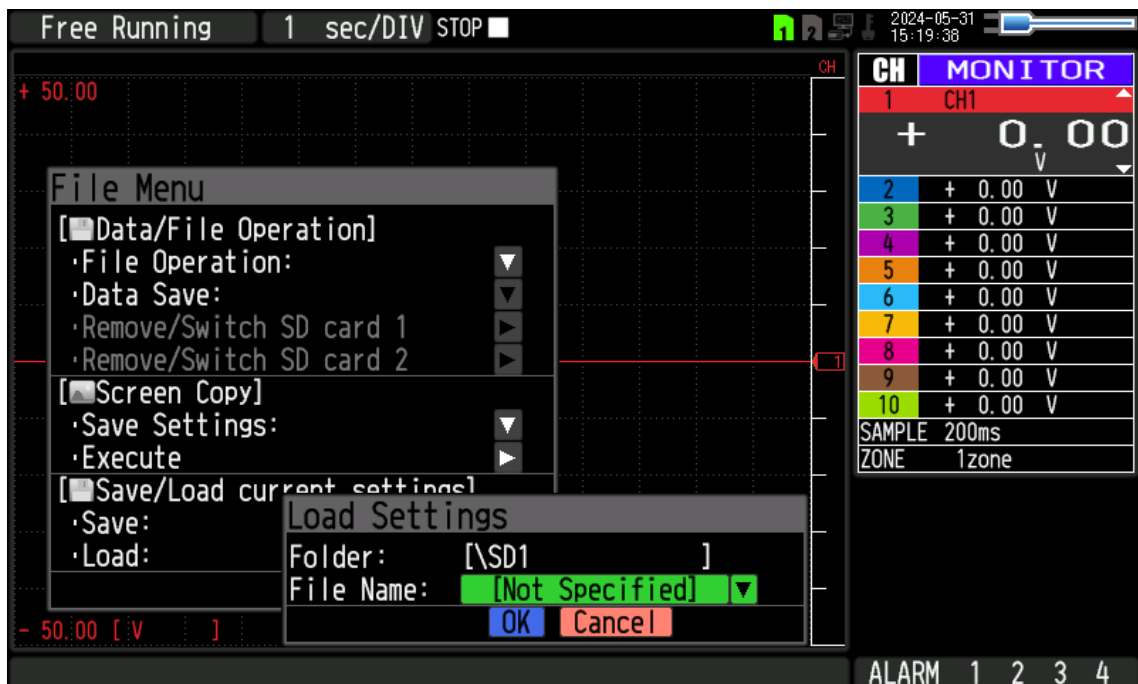
ID : GRAPHTEC GL840 PATTERN ROM
Version: x.xx  A00
```

Select PatternVerxxxRevyyyyAzz.GL840, and press the “ENTER” key.
Do not turn off the power until the version upgrade process is completed.
(You can hear a buzzer sound after the upgrade process.)

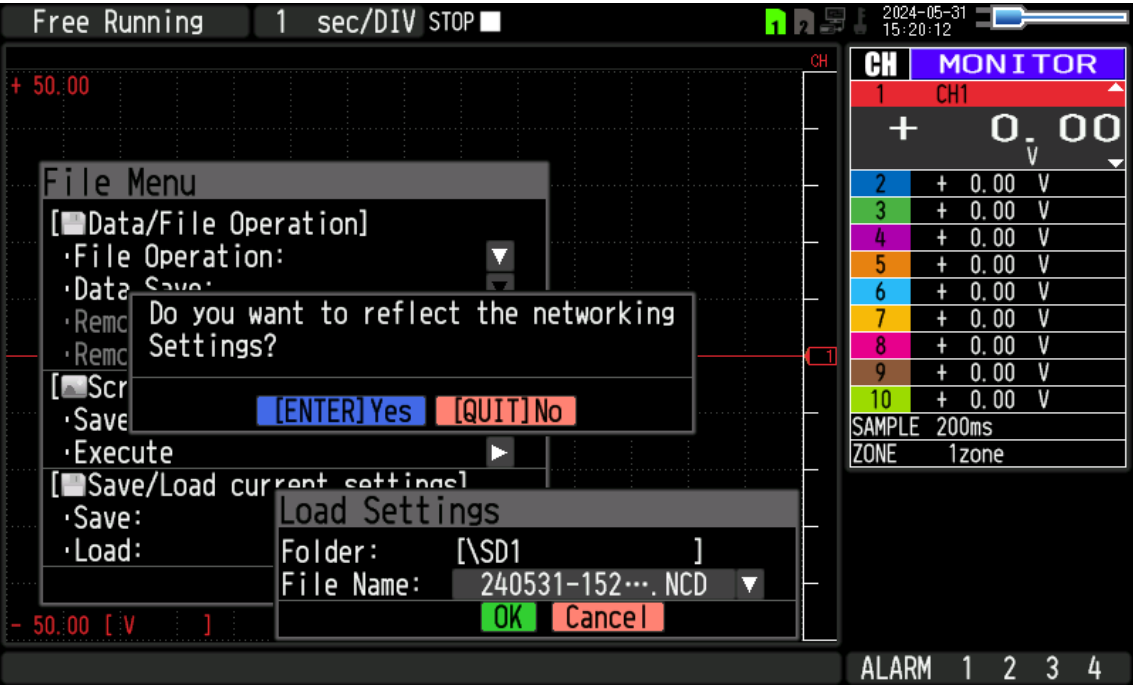
13. Remove the SD card and turn on the power.
14. Open the “File menu” by pressing the “FILE” key.



15. Select “Load ” of “Save/Load current settings” to display the following screen.
Then, select the CND file saved in Step 4 and select “OK” to apply the operation settings.



16. Select the NCD file saved in Step 6 and select “OK” to apply the communication settings.



17. Press the “ENTER” key to apply the networking settings or press the “QUIT” to cancel the setting.

※Please follow the instructions on the display if you see the message “Because of differences in AMP configuration, turn off the power, then back on for changes to take effect.”

18. firmware saved in the SD card.

GL840 version upgrade is completed.