

## How to update GL980 / GL2000 firmware

### 1. Notes

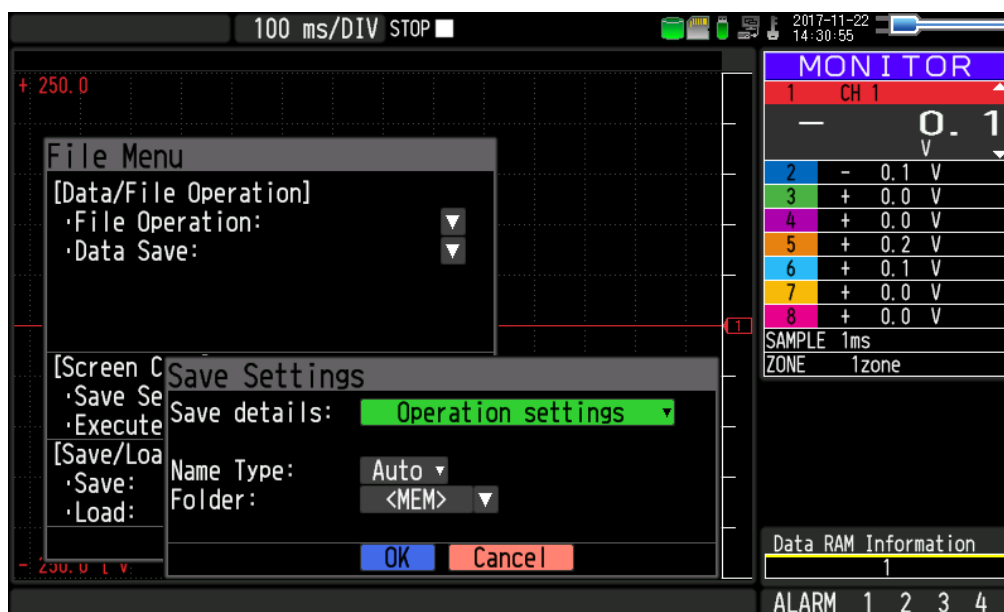
- This manual explains the update method of GL980/GL2000 Firmware.
- During the update, please do not turn off the power absolutely. If the power is cut off along the way, the firmware can be damaged. In this case, it may become unrecoverable state.
- An SD card or a USB memory is required to perform firmware update. Available type in the slot of SD card for GL980/GL2000 is SD/SDHC. (SDXC is not available.)
- When updating the version, the setting conditions will be initialized. In advance, save the setting conditions. For instructions on how to save it, refer to "2. Version update procedure".
- The set values in I/F menu (IP address, etc.) vary according to the version update. In advance, save the setting conditions for communications. For instructions on how to save it, refer to "2. Version update procedure".

## 2. Version update procedure

### 2-1. Save the setting conditions

(1) Open the "File menu" by pressing "FILE" key.

(2) Select "Save" of "Save/Load current settings" to display the following screen.



(3) Set "Save details:" to "Operation settings"

(4) Set "Name Type" and "Folder" and then select "OK".

• Name Type

: Auto → The file name is saved as date and time.

(Ex.) 20171127\_115521.CND

: User → Saved in any file name. (Ex.) SAVEFILE.CND

: SN → Saved in any file name with SER serial number.

(Ex.) SAVEFILE\_SER1.CND

• Folder

: <MEM> → Save in the internal memory.

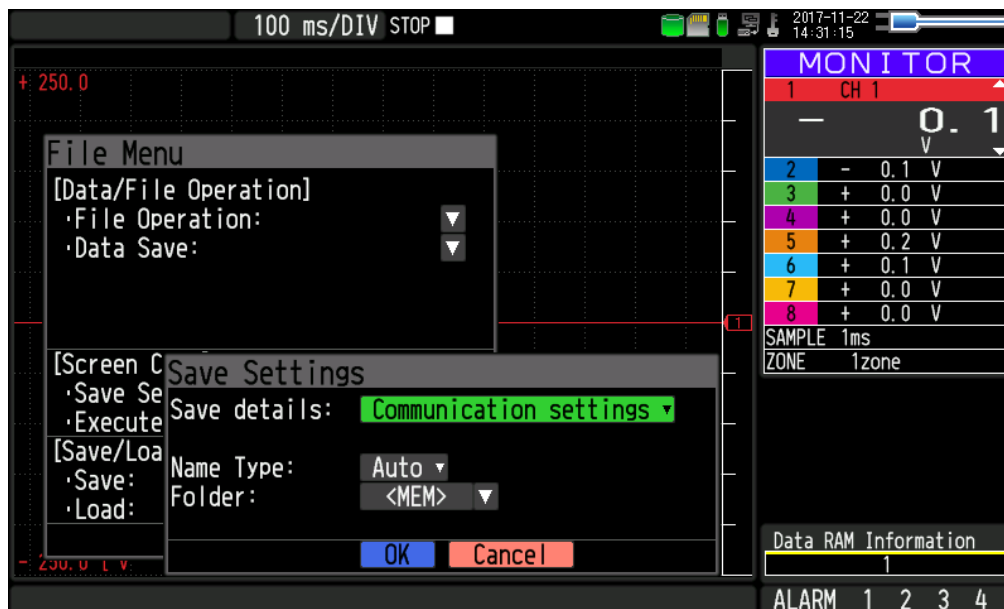
: <SD> → Save in the SD card.

: <USB1> → Save in the USB memory.

## 2-2. Save the setting conditions for communications

(1) Open the "File menu" by pressing "FILE" key.

(2) Select "Save" of "Save/Load current settings" to display the following screen.



(3) Set "Save details:" to "Communication settings"

(4) Set "Name Type" and "Folder" and then select "OK".

- Name Type

: Auto → The file name is saved as date and time.

(Ex.) 20171127\_115521.NCD

: User → Saved in any file name. (Ex.) SAVEFILE.NCD

: SN → Saved in any file name with SER serial number.

(Ex.) SAVEFILE\_SER1.NCD

- Folder

: <MEM> → Save in the internal memory.

: <SD> → Save in the SD card.

: <USB1> → Save in the USB memory.

## 2-3. Preparation for version update

(1) Prepare update file.

MainVerxxxRevyyyyAzz.GL980\_GL2000

MainVerxxxRevyyyyAzz.GL980\_GL2000\_B

\*Two files are created in V1.38 and later versions.

Version information is shown below.

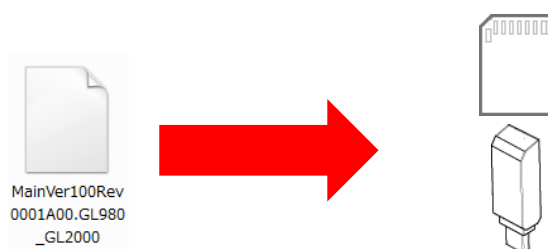
- xxx: Version information  
(Ex.) "110" indicates "V1.10".
- yyyy: Revision Information  
(Ex.) "0001" indicates "Rev0001".
- zz: Special item number  
(Ex.) "00" indicates "standard product".

\* The version upgrade files for GL980 and GL2000 are the common ones.

(2) Prepare media to be used for updating.

Either SD card or USB memory is used for version update.

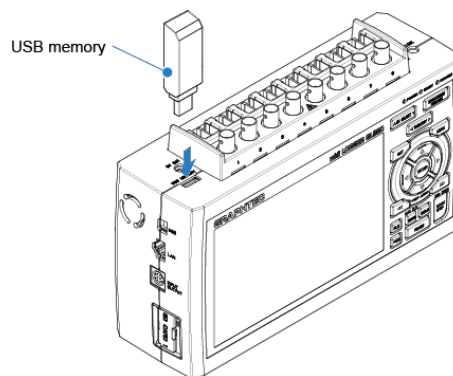
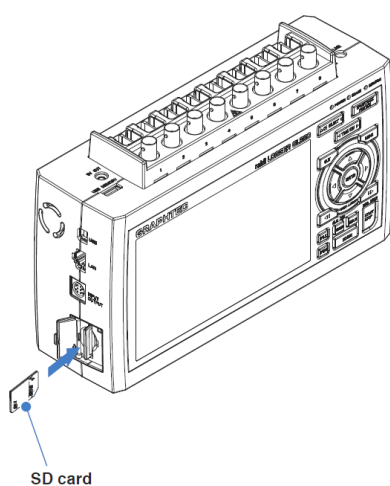
Set the media used for updating to the PC and copy the file used for updating to the root directory of the media. The root directory is the top of the folder hierarchy in the media.



\* For V1.38 and later versions, the version upgrade file will differ depending on the unit you use. Please copy the two files to the upgrade media.

(3) Insert media used for updating into unit

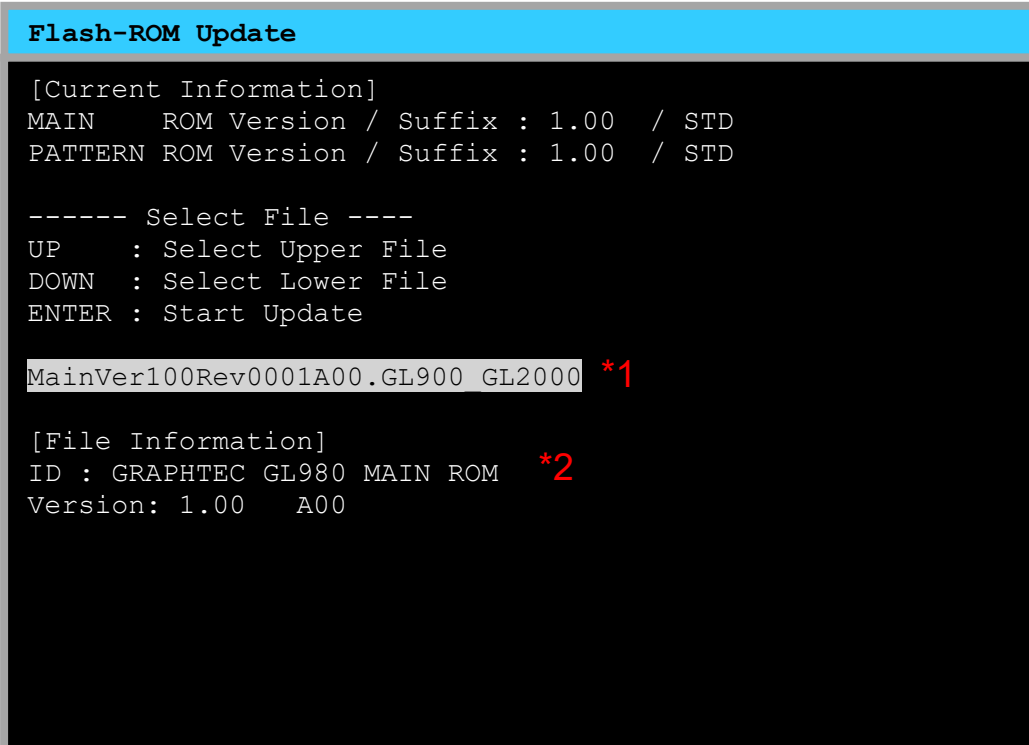
During GL980/GL2000 power is off, insert the media including the update file copy from your PC.



## 2-4. Version update

(1) Turn on the power of GL980/GL2000.

After a few seconds, the unit enters the firmware update mode and the following screen is displayed.



```

Flash-ROM Update

[Current Information]
MAIN      ROM Version / Suffix : 1.00 / STD
PATTERN   ROM Version / Suffix : 1.00 / STD

----- Select File -----
UP        : Select Upper File
DOWN      : Select Lower File
ENTER     : Start Update

MainVer100Rev0001A00.GL900 GL2000 *1

[File Information]
ID : GRAPHTEC GL980 MAIN ROM *2
Version: 1.00 A00
  
```

\*1 The file name is the name of the upgrade file prepared in step "2-3 Preparation for Version Upgrade". One of the two corresponding upgrade files will be displayed depending on the unit you use.

"MainVerxxxRevyyyAzz.GL980\_GL2000"

or

"MainVerxxxRevyyyAzz.GL980\_GL2000\_B"

will be displayed.

\*2 GRAPHTEC GL980 MAIN ROM will be displayed in the ID column even if updating is performed on GL2000. There is no problem to keep update process in GL2000 since the file is used commonly with GL980 and GL2000.

(2) Confirm that the correct file name is displayed in reverse, and then press the "ENTER" key.

Version update is started up. Wait until it is finished.

- (3) “Please Turn Off Power. --- I have locked up.” message is displayed with yellow characters. Then, turn off the power.

Do not turn off the power until the version update is finished and then the buzzer start up.

```
Flash-ROM Update

----- Select File -----
UP      : Select Upper File
DOWN    : Select Lower File
ENTER   : Start Update

MainVer100Rev0001A00.GL980 GL2000

[File Information]
ID : GRAPHTEC GL980 MAIN ROM
Version: 1.00   A00

Reading ROM Data ....
 7155KB Complete.
Start ROM Update Sequence.
---Erase---
100% Complete.
---Write---
100% Complete.
ROM Update ALL Complete!!

Please Turn Off Power. --- I have locked up.
```

- (4) Remove the media that has used for updating and turn on the power.

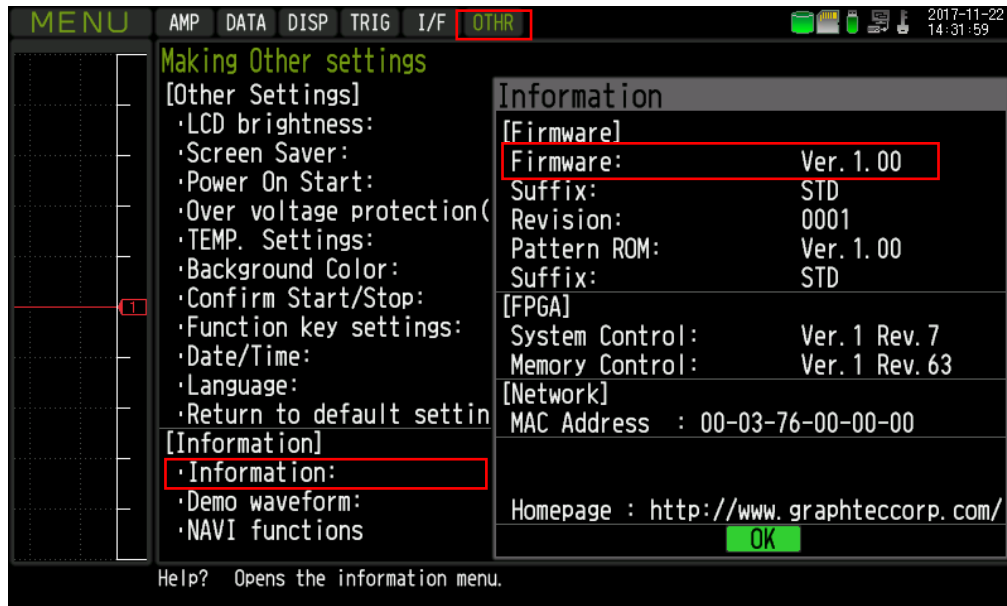
(5) Verify the version.

Press the "MENU" key to open the setting menu.

Press the "MENU" key further and select the "OTHR" tab.

Select "· INFORMATION:" using Arrow key and then press "ENTER" key.

The information dialog will be displayed, check the firmware version.





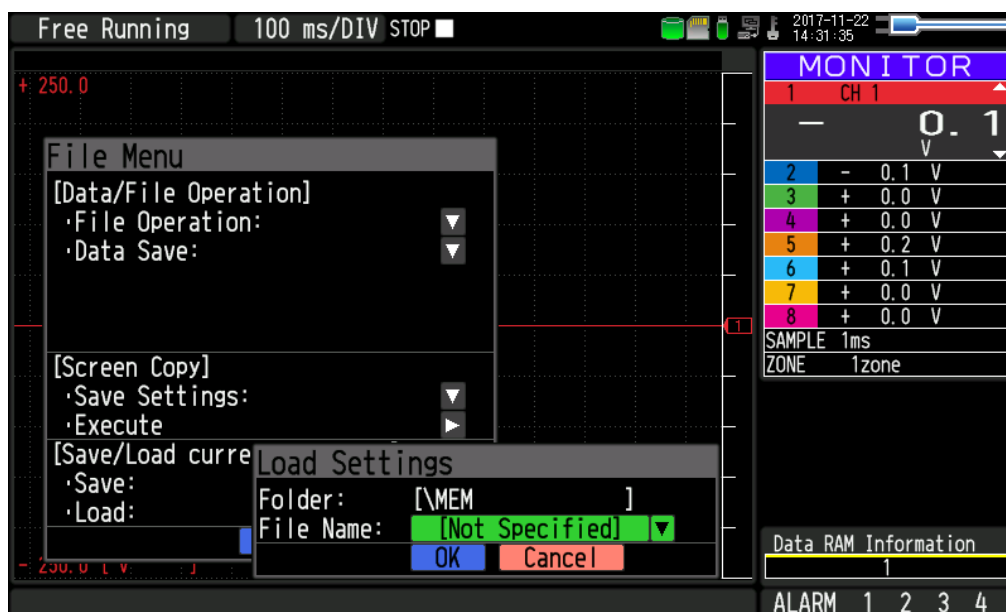
## 2-5. Restore condition settings of operation and communication

(1) Open the "File menu" by pressing "FILE" key.

(2) Select "Load" of "Save/Load current settings" column to display the following screen.

Now, open the setup file saved in Step 2-1 and select "OK" to apply the settings.

(The extension of file is the .CND.)



(3) In the same way as above, open the communication setting file saved in step 2-2 and select "OK" to apply the setting. (The extension of file is .NCD.)

## **2-6. Delete the file for updating**

Delete the file in the media that has used for updating using a PC.

\* When the media containing the file for update is inserted into unit as the media to be used recording data, the unit may start up in the firmware update mode and cannot record data. This problem can be prevented by deleting the update file from the media after the update process is finished.

GL980/GL2000 version update is completed.